

Destined for Leadership: A Roadmap from Medical Laboratory Scientist to “Nurturing the Next Generation”

Phyllis Ingham EdD. MEd. MLS(ASCP)cm AHI(AMT)
Program Director Medical Laboratory Technology &
Phlebotomy

Phyllis.ingham@westgatech.edu

2024



Beyond the Bench: What's Next?



Learning Objectives

1. Discover the facts about the journey from a Medical Laboratory Scientist to Laboratory Leadership and Educator, including the key milestones and opportunities in the transition.
2. Discuss practical insights and essential skills required for effective Laboratory Leadership and teaching in the medical laboratory profession, emphasizing the importance of mentorship and knowledge transfer.
3. Develop a plan and inspire a commitment among the audience to actively engage in teaching the next generation of medical laboratory professionals and take on leadership roles, contributing to the advancement and growth of the field.



Imagine for a Minute









NATIONAL



**SUICIDE
PREVENTION**
WEEK



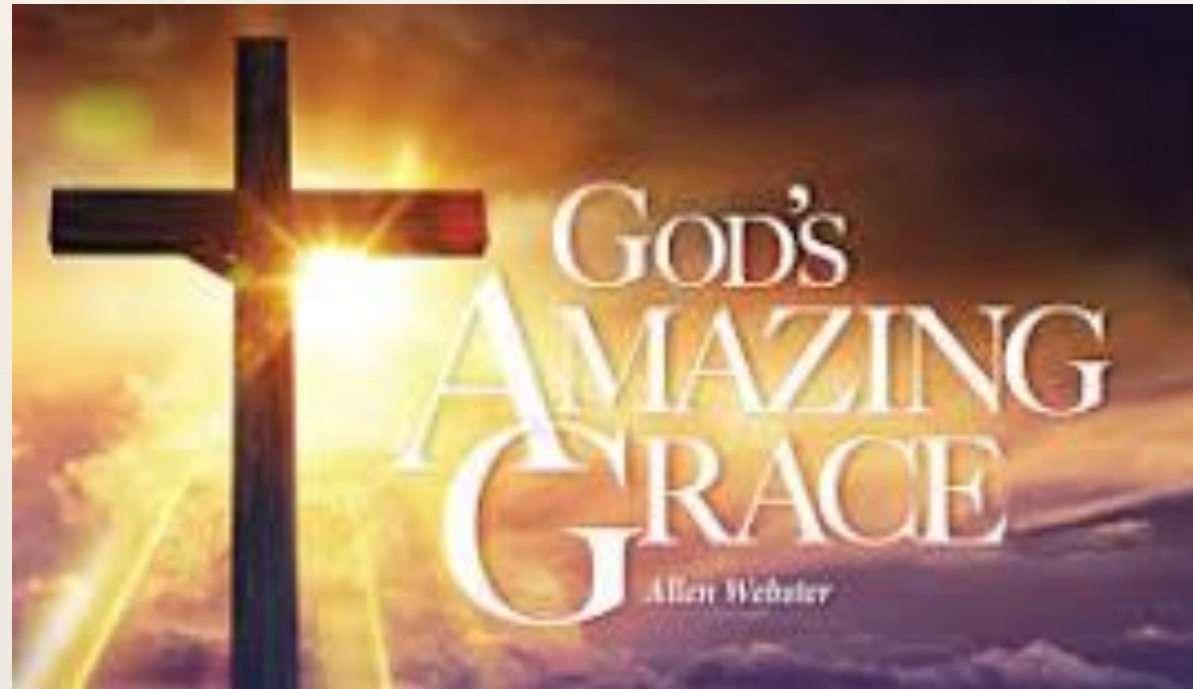
www.westgatech.edu

Throw in the towel...Give up.....



God's Amazing Grace!

Shear GRIT, determination, and God's grace!



Persistence Pays Off



How Can You Keep Persisting?



GRIT

Grit is the ability to keep working toward a goal, overcoming challenges and sticking with the goal even when it's hard. Having grit means having the determination and passion for long-term goals. Grit isn't talent or luck.



GUMPTION



RESILIENCE



INTEGRITY



TENACITY

Angela Duckworth's GRIT Formula

Talent X Effort = Skill

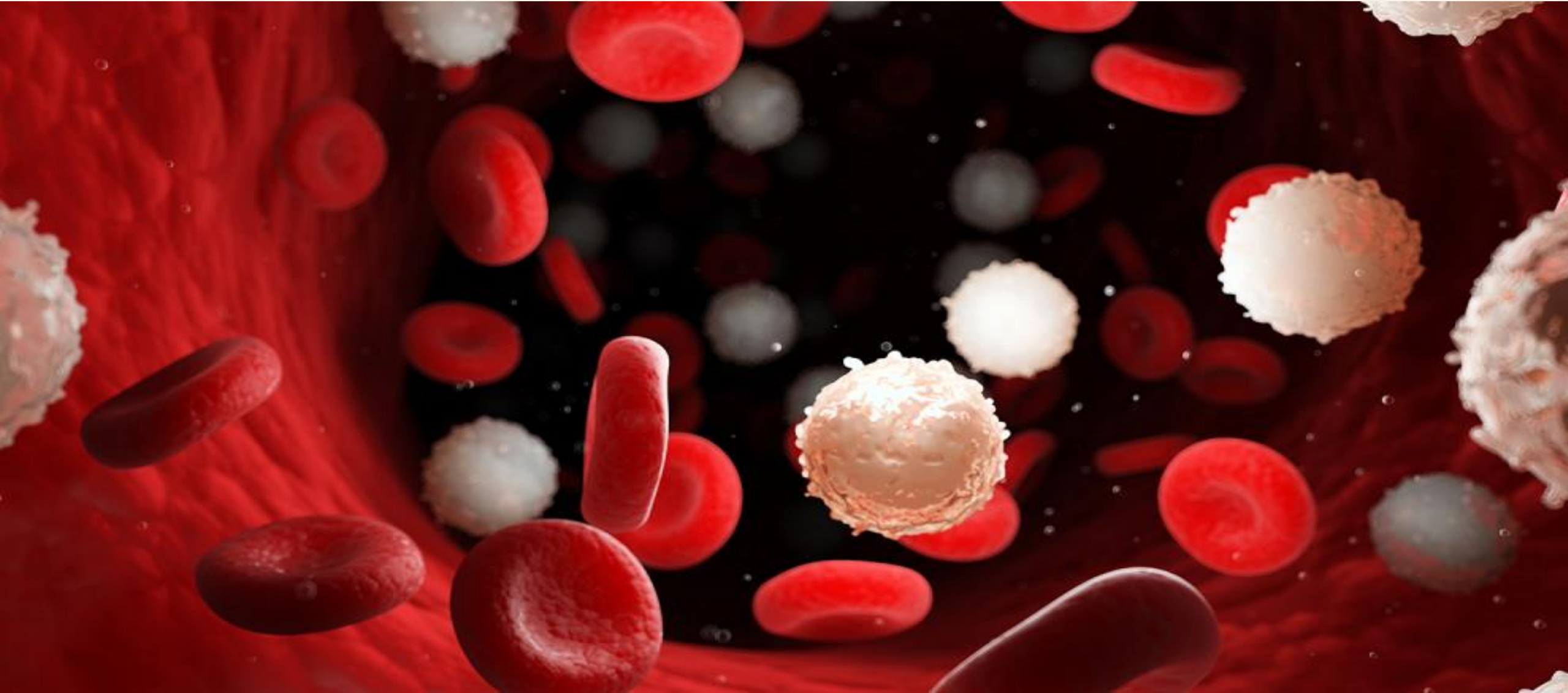
and

Skill X Effort = Achievement

First Laboratory Position



Hematology Oncology Staff



Supervisor Roles

- Department Supervisor
- Multi-Department Supervisor
- Shift Supervisor
- Laboratory Director
- Multi-Department Director
- Many Interdisciplinary Teams

Piece of the "Puzzle" Missing



Finding Your “Calling” Your “Why” Your “Purpose”



WHAT IS YOUR **WHY?**

3 Brick Layers



All Asked the Same Question....

What are you doing?



- 1st Brick Layer said “ I’m laying bricks”....
- 2nd Brick Layer said “I’m building a church”
- 3rd Brick Layer said “I’m building the house of God”

Finding Your “Why” Your “Purpose”

- The first brick layer just had a “job”.
- The second brick layer had a “career”.
- The third brick layer had a “calling”.

Educating Laboratory Professionals Became My “Why”

Education is for improving the lives of others and for leaving your community and world better than you found it.

Marian Wright Edelman

Education is: Leaving a Legacy



Education is Teaching from the Heart!

“When educating the minds of our youth, we must not forget to educate their hearts.”

- Dalai Lama



What Does the Day in the Life of Educator Look Like?



Student Centered Focus

- Curriculum
- Empathy
- Motivator
- Counselor
- Leader
- Positive Attitude
- Impact

Curriculum

- Know the course curriculum
- Be able to teach others
- Be able to relate to students
- Be Motivated
- Never stop learning!

What people think **empathy** is:

Feeling sorry
for someone.

What **empathy** actually is:

Sensing someone's
emotions.

Imagining yourself in
their situation.

Listening attentively
to their experiences.

Respecting their
feelings without
trying to change
them.

Offering support.

Showing genuine
concern for them.

Avoiding judgment
and criticism.



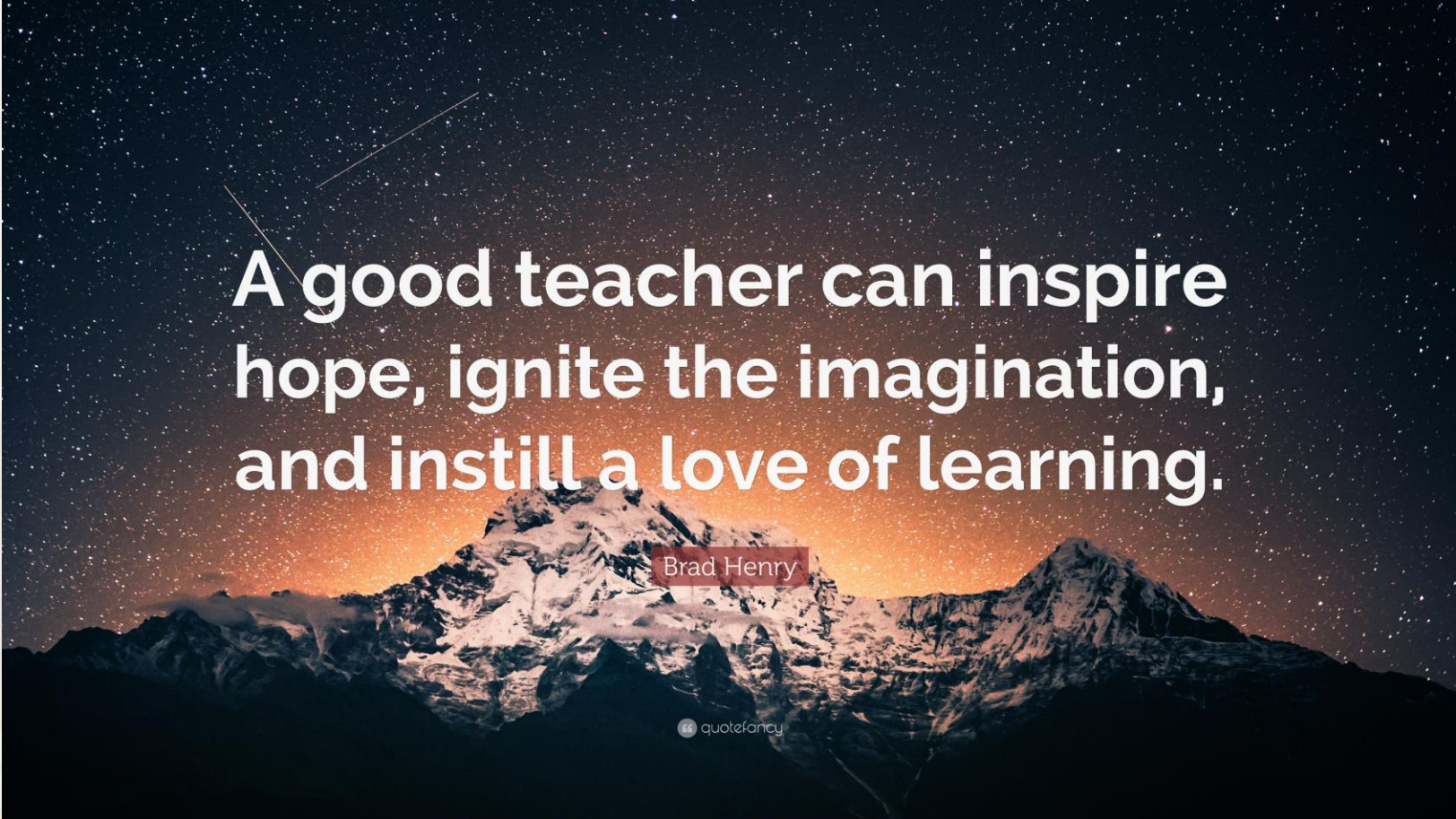
© Justin Wright

Counselor: Creating a Culture of Belonging

- It is important to create a culture where students feel valued, heard, and supported.
- A healthy college classroom culture encourages collaboration, creativity, and a sense of purpose.



Motivator



A good teacher can inspire hope, ignite the imagination, and instill a love of learning.

Brad Henry

quote fancy

Understanding Motivation

**THE DIFFERENCE BETWEEN
WHO YOU ARE AND
WHO YOU WANT TO BE
IS **WHAT YOU DO.****

The Big Picture



Three Words that Best Define Motivation

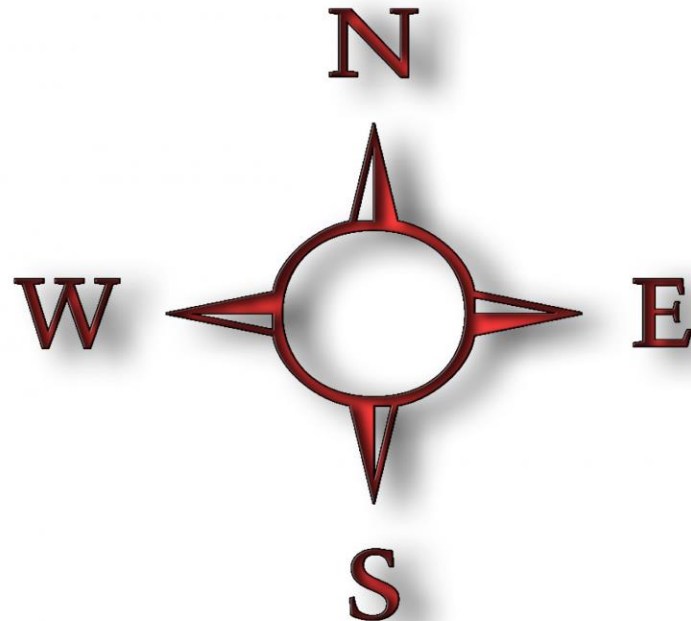


Direction

- Direction in motivation refers to the clarity and specificity of an individual's goals or objectives.
- It involves having a clear sense of **where one wants to go and what they want to accomplish.**



- **Direction** acts as a **guiding compass** that helps individuals make decisions and prioritize actions that align with their aspirations.



Intensity

- **Intensity in motivation** pertains to the level of enthusiasm, energy, and passion an individual invests in pursuing their goals.
- It reflects the **emotional and cognitive investment** one has in a particular endeavor.
- High intensity is often associated with a **deep commitment** to achieving the desired outcome. It fuels **perseverance and determination** in the face of challenges.

Persistence

- **Persistence** refers to the **tenacity and resilience** with which individuals continue to pursue their goals, even when faced with obstacles, setbacks, or failures.
- It's the ability to **maintain one's motivation** and effort over an extended period despite difficulties.
- Persistence is closely tied to the idea of **not giving up** when confronted with challenges.



How are We Motivated?

A silhouette of a person standing in a desert landscape at sunset, with their arms raised in a 'V' shape. The background is a warm, orange and red sky over a vast, flat desert floor.

**HOW DO YOU
STAY MOTIVATED?**

It's Your Turn

Activity



Time to Test Your Motivation



Is it YOUR Time to Pursue Options?



www.westgatech.edu

Purpose = Motivation

"Purpose is not what we do, but why we do it."

FIND YOUR
PURPOSE
IN LIFE

TIME OUT FOR TEACHERS

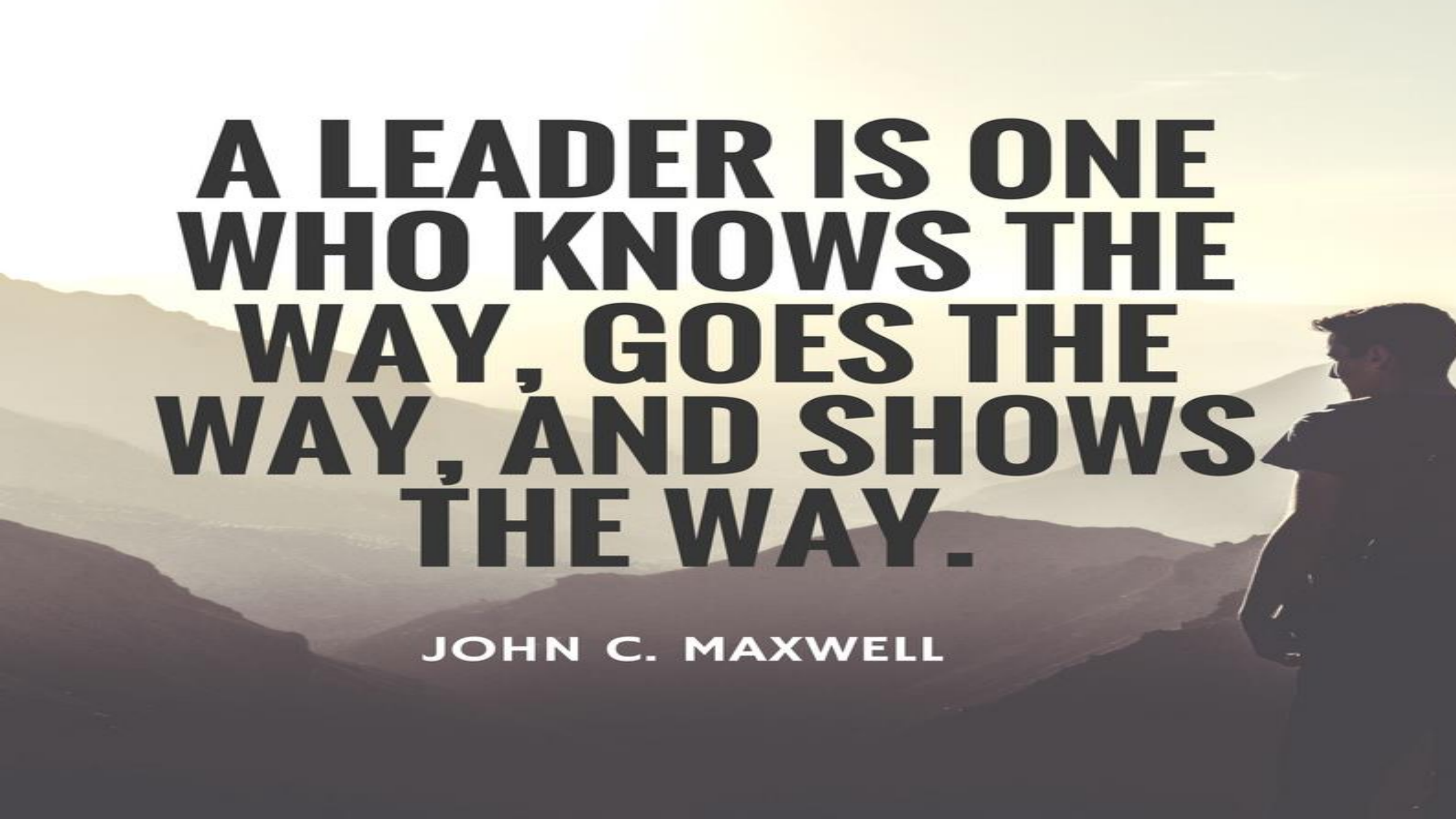


Educator as Leader

THE BEST
LEADERS
ARE ALSO
TEACHERS



Photo Credit: AdobeStock/wayne_0216

A person in silhouette is shown from the side, looking out over a vast mountain range. The scene is bathed in the warm, golden light of a sunrise or sunset, with the sun low on the horizon, creating a hazy, atmospheric effect. The mountains are layered, with some in the foreground and others receding into the distance. The overall mood is contemplative and inspiring.

**A LEADER IS ONE
WHO KNOWS THE
WAY, GOES THE
WAY, AND SHOWS
THE WAY.**

JOHN C. MAXWELL

Attitude is Everything

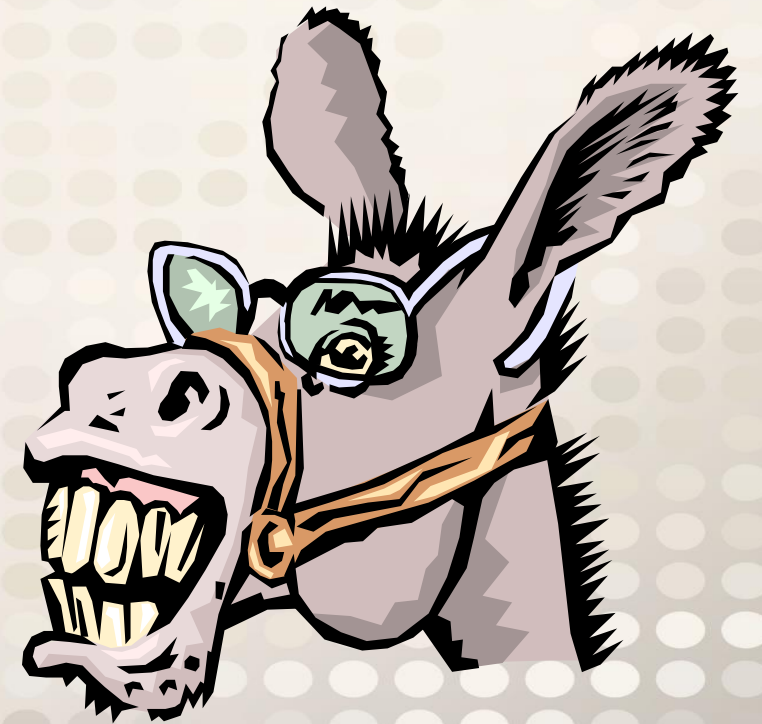
- John Maxwell's Leadership's principles offer educational leaders valuable guidance on **navigating challenges** with **resilience and adaptability**.
- **Positive Attitude: Radiate positivity and optimism**, even in the face of complex tasks and tight deadlines.
- A **positive outlook** can be contagious, encouraging your laboratory team to tackle challenges with a **can-do attitude**.

"Old Mule Story"

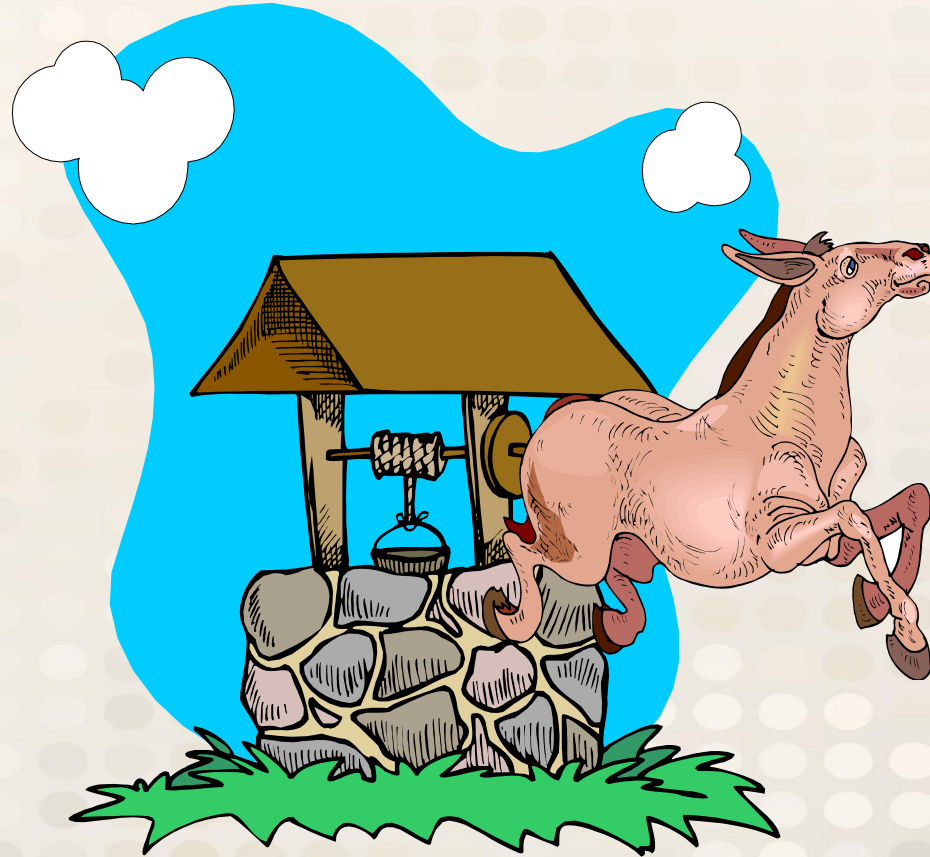


Never Give Up!

Shake it off and step up..
Shake it off and step up..
Shake it off and step up..
**He repeated time after time to
encourage himself.**



Attitude is Everything!



IMPACT



Life Long Impact

- Every student has a story!
- As an educator, you become a part of that story!

Education Realization Must Knows!

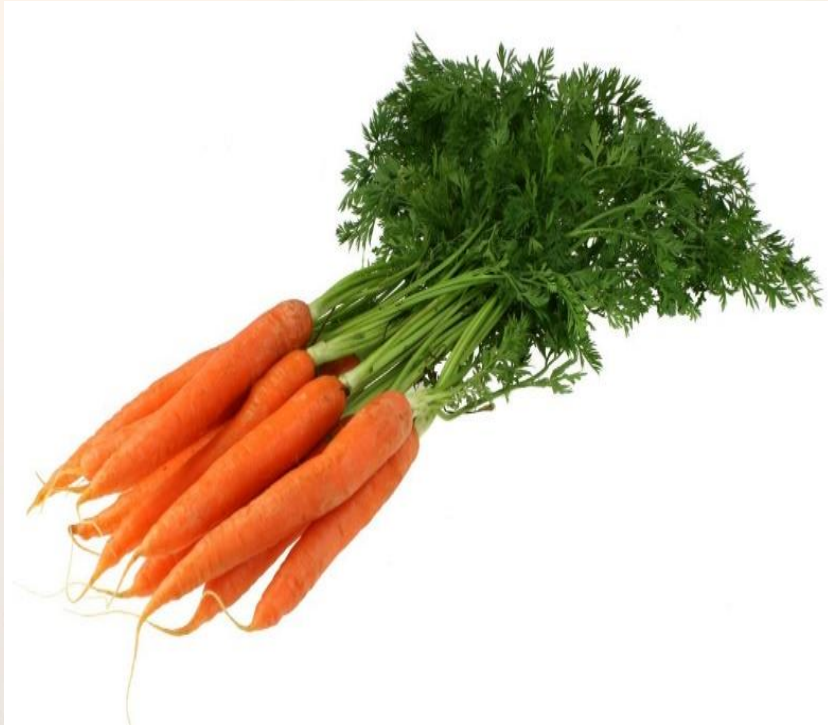
- Real **Achievement** does not happen overnight.
- To **keep** yourself **motivated**, At the end of everyday ask **yourself** “**Am I better today than yesterday**”.
- Remember you do not have to be flawless each day, instead look for **small measures of improvement**.
- “**We can not master life in a day, but we can master today and then do it again tomorrow**”



STORYTIME



Are You a Carrot, an Egg, or a Coffee Bean?



Just Add Water



Moral of the Story: “Transformation”

A Short Story “Lesson Learned”



Final Thoughts



www.westgatech.edu

Best Decision Making Quotes

- **"Our greatest weakness lies in giving up. The most certain way to succeed is always to try just one more time."** – Thomas Edison
- **"Believe you can and you're halfway there."** – Theodore Roosevelt
- **"Success is not the key to happiness. Happiness is the key to success. If you love what you are doing, you will be successful."** – Albert Schweitzer

- **"The best way to predict the future is to create it." – Abraham Lincoln**
- **"Your work is going to fill a large part of your life, and the only way to be truly satisfied is to do what you believe is great work. And the only way to do great work is to love what you do." – Steve Jobs**

So, What's Beyond the Bench?





It's YOUR Decision!



www.westgatech.edu



References

- Duckworth, A. L. (2016). *Grit: The Power of Passion and Perseverance*. Scribner.
- Gordon, J., West, D., (2019) *The Coffee Bean: A Simple Lesson to Create Positive Change*. Wiley & Sons, Inc. Hoboken, New Jersey.
- Maxwell, J.C. (2008). *Make Today Count*. Center Street.
- Maxwell, J. C. (1998). *The 21 Irrefutable Laws of Leadership: Follow Them and People Will Follow You*. Thomas Nelson.
- Miller, R. T. (2019). The psychology of motivation. Psychology Today.
<https://www.psychologytoday.com/articles/201901/the-psychology-motivation>
- Pink, D. H. (2009). *Drive: The Surprising Truth About What Motivates Us*. Riverhead Books.
- Sinek, S. (2014). *Leaders Eat Last: Why Some Teams Pull Together and Others Don't*. Portfolio.
- Smith, J. A., & Johnson, L. M. (2021). Motivation theories and their practical implications. *Journal of Applied Psychology*, 56(3), 123-135.
- Weber, A. (2009) *Rules of Thumb: How to Stay Productive and Inspired Even in the Most Turbulent Times*. Harper Business.