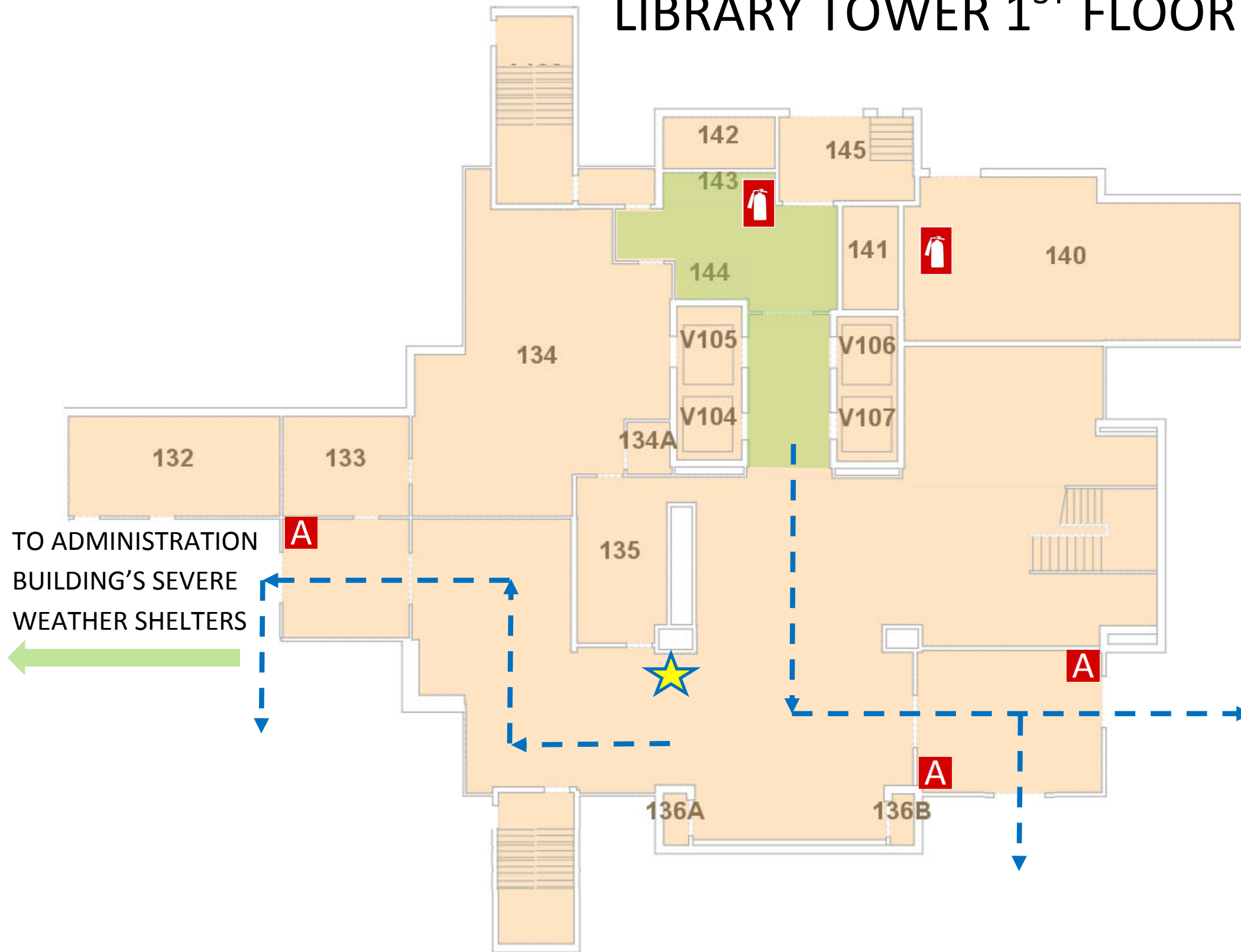





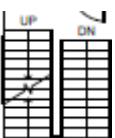
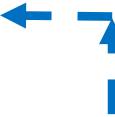

EMERGENCY PLAN

LIBRARY TOWER 1ST FLOOR



OFFICE OF
PUBLIC SAFETY



-  YOU ARE HERE
-  FIRE EXTINGUISHER
-  FIRE ALARM PULL STATION
-  STAIRS
-  EXIT ROUTE
-  SEVERE WEATHER SHELTER AREAS



- 1st FLOOR, LOADING DOCK
- 1st FLOOR ADMINISTRATION BUILDING (INTERIOR HALL)
- RESTROOMS AND STAIRWELLS ON ALL FLOORS (ONLY AS LAST RESORT)

IN CASE OF FIRE USE STAIRWAY TO EXIT- DO NOT USE ELEVATOR

AUM ALERT Join at www.aum.edu to receive campus emergency notifications

CAMPUS POLICE
334-244-3424

 **EMERGENCY EVACUATION CHAIR ON FLOORS 10 & 7**