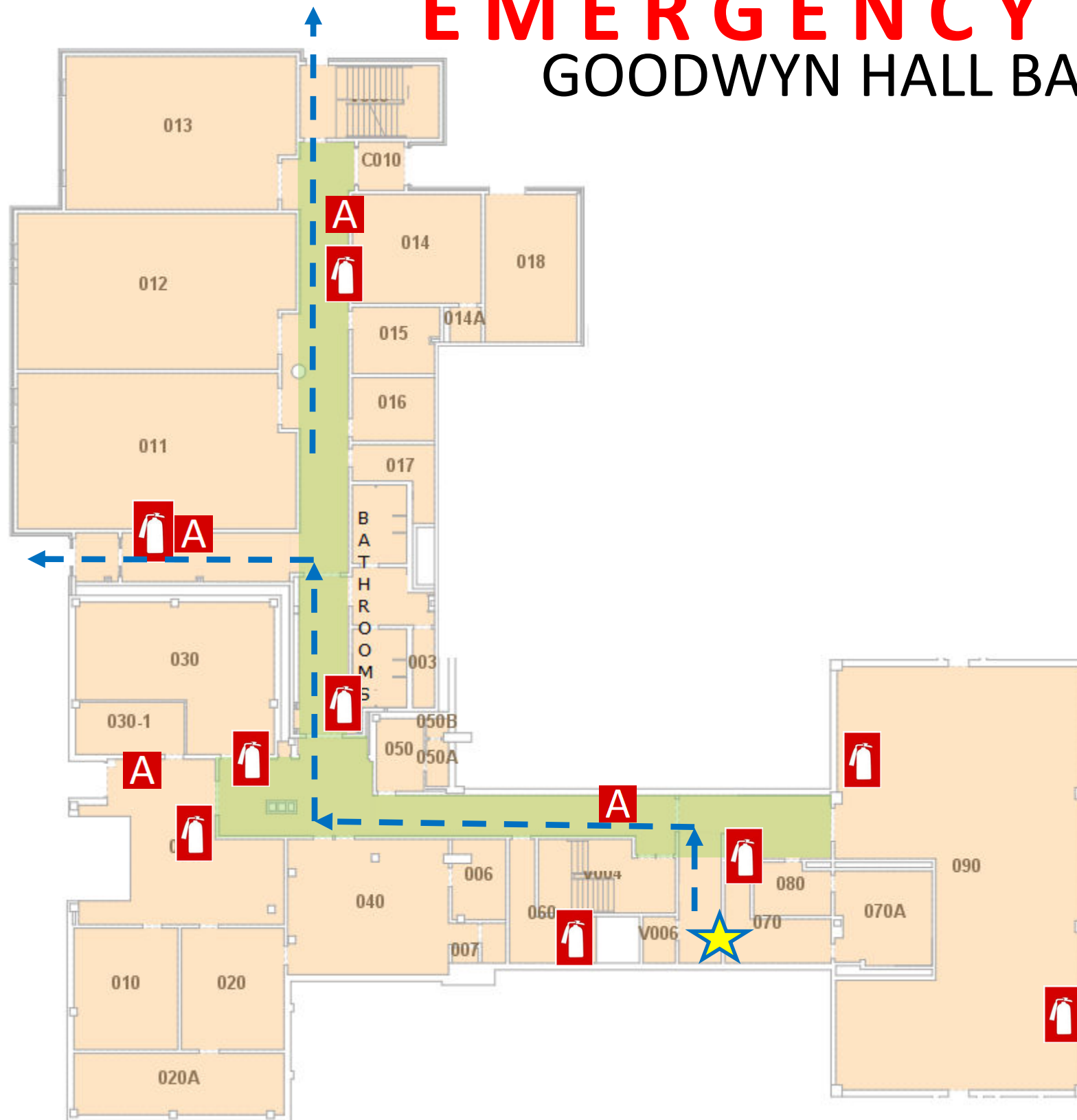





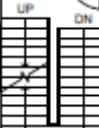

EMERGENCY PLAN


GOODWYN HALL BASEMENT



OFFICE OF
PUBLIC SAFETY



-  YOU ARE HERE
-  FIRE EXTINGUISHER
-  FIRE ALARM PULL STATION
-  STAIRS
-  EXIT ROUTE
-  SEVERE WEATHER SHELTER AREAS

- 
 - 1st FLOOR, ROOM 109
 - 1st FLOOR, ROOM 110
 - 1st FLOOR, ROOM 111
 - 1st FLOOR, ROOM 112
 - 1st FLOOR, ROOM 113
 - 1st FLOOR, ROOM 116
 - Basement, Hallways

**IN CASE OF FIRE USE
STAIRWAY TO EXIT-
DO NOT USE ELEVATOR**

AUM ALERT Join at www.aum.edu to receive campus emergency notifications

**CAMPUS POLICE
334-244-3424**

 **EMERGENCY EVACUATION
CHAIR LOCATED ON 3RD FLOOR**