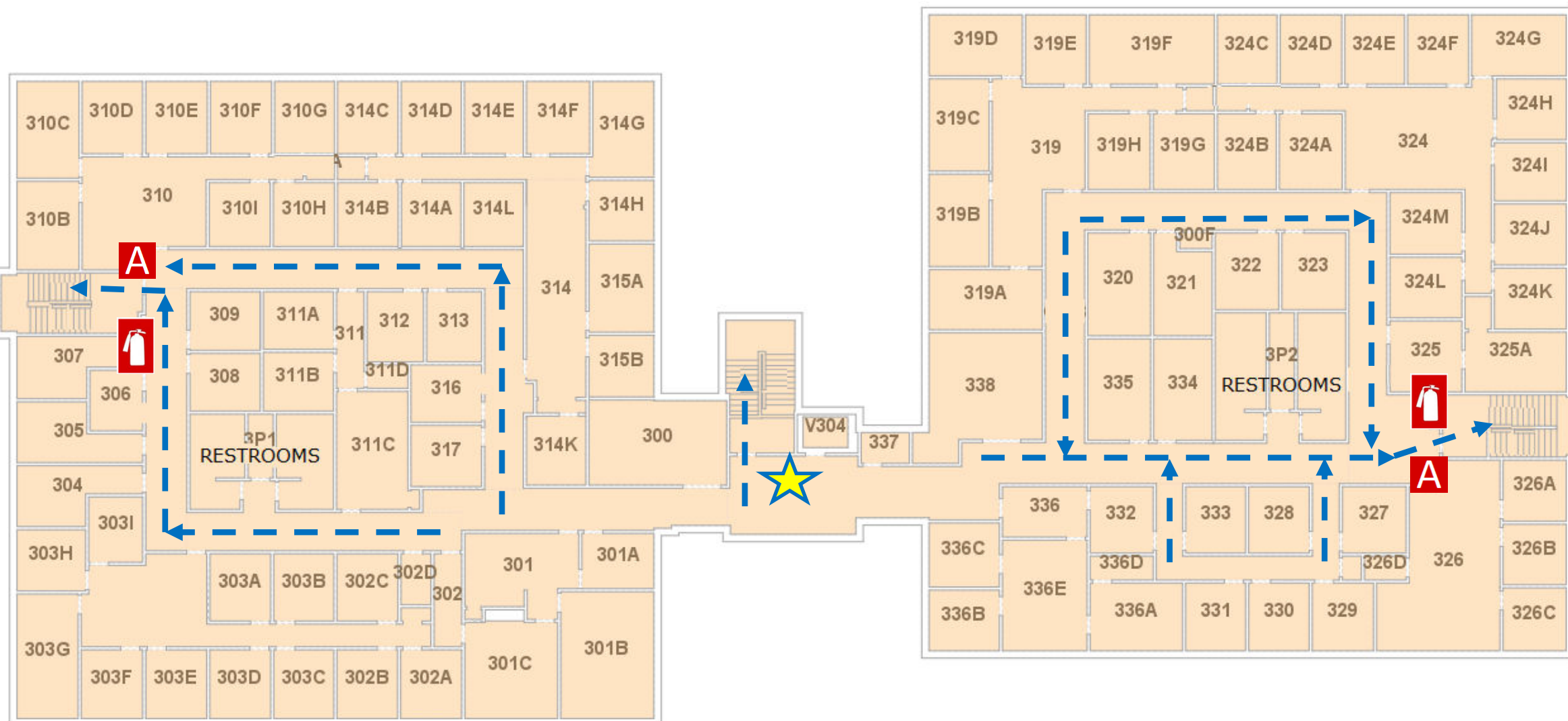





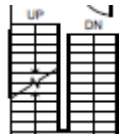
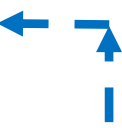
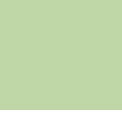
EMERGENCY PLAN


CLEMENT HALL 3RD FLOOR



OFFICE OF
PUBLIC SAFETY



-  YOU ARE HERE
-  FIRE EXTINGUISHER
-  FIRE ALARM PULL STATION
-  STAIRS
-  EXIT ROUTE
-  SEVERE WEATHER SHELTER AREAS

-  SEVERE WEATHER SHELTER AREA
- 1st FLOOR, ROOM 108
- 1st FLOOR, INTERIOR HALLS
- 1st FLOOR, RESTROOMS
- 2ND FLOOR, INTERIOR HALL

IN CASE OF FIRE USE STAIRWAY TO EXIT- DO NOT USE ELEVATOR

 Join at www.aum.edu to receive campus emergency notifications

CAMPUS POLICE
334-244-3424

 EMERGENCY EVACUATION CHAIR LOCATED ON 3RD FLOOR