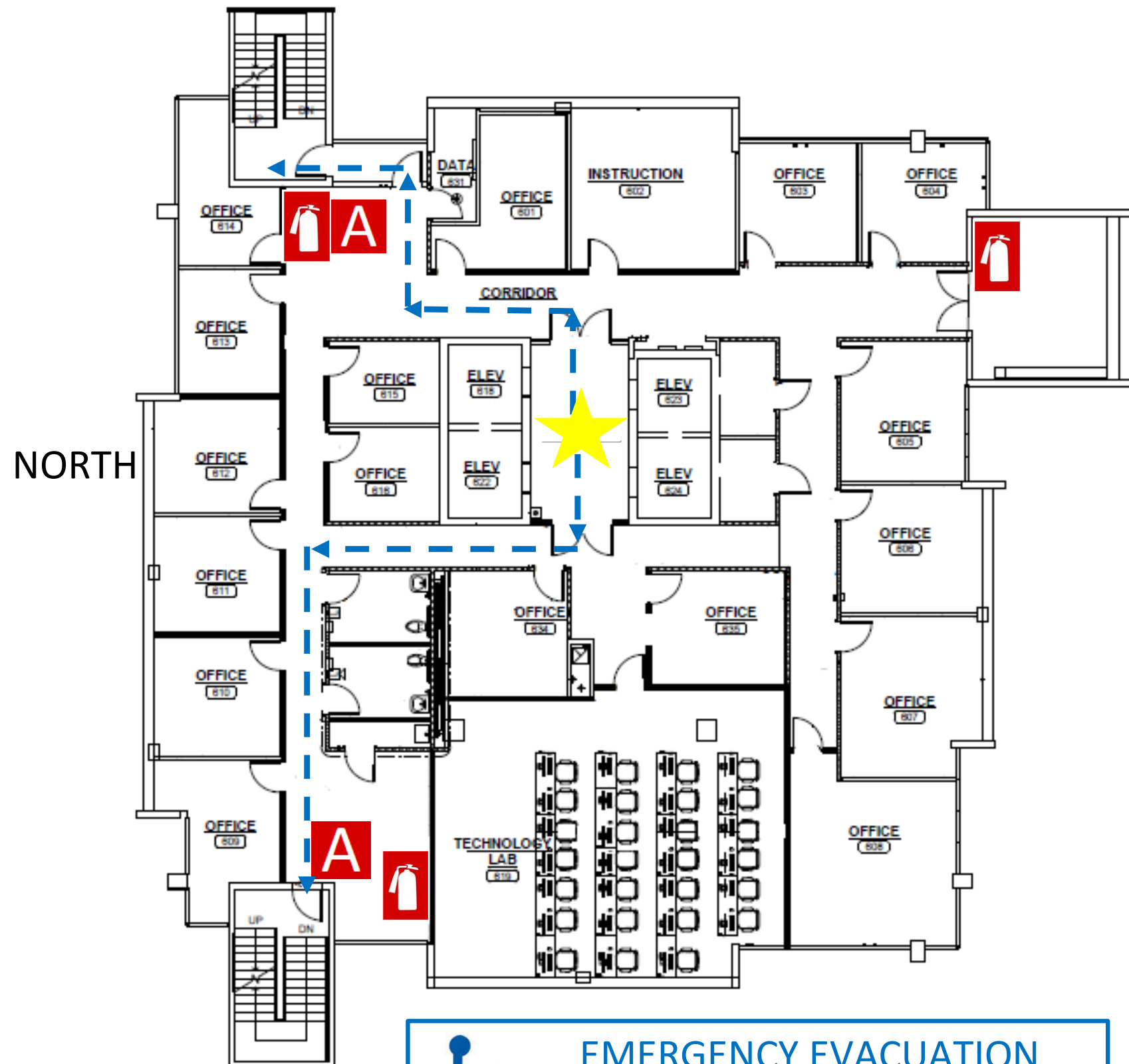

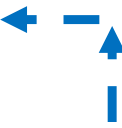


# LIBRARY TOWER 6<sup>TH</sup> FLOOR



-  YOU ARE HERE
-  FIRE EXTINGUISHER
-  FIRE ALARM
-  STAIRS
-  EXIT ROUTES

**CAMPUS POLICE**  
**334-244-3424**

**FIRE DEPARTMENT**  
**911**

 **EMERGENCY EVACUATION CHAIR LOCATED ON 10<sup>TH</sup> FLOOR**

**IN CASE OF FIRE USE STAIRWAY TO EXIT DO NOT USE ELEVATOR**