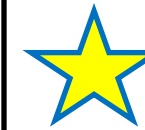
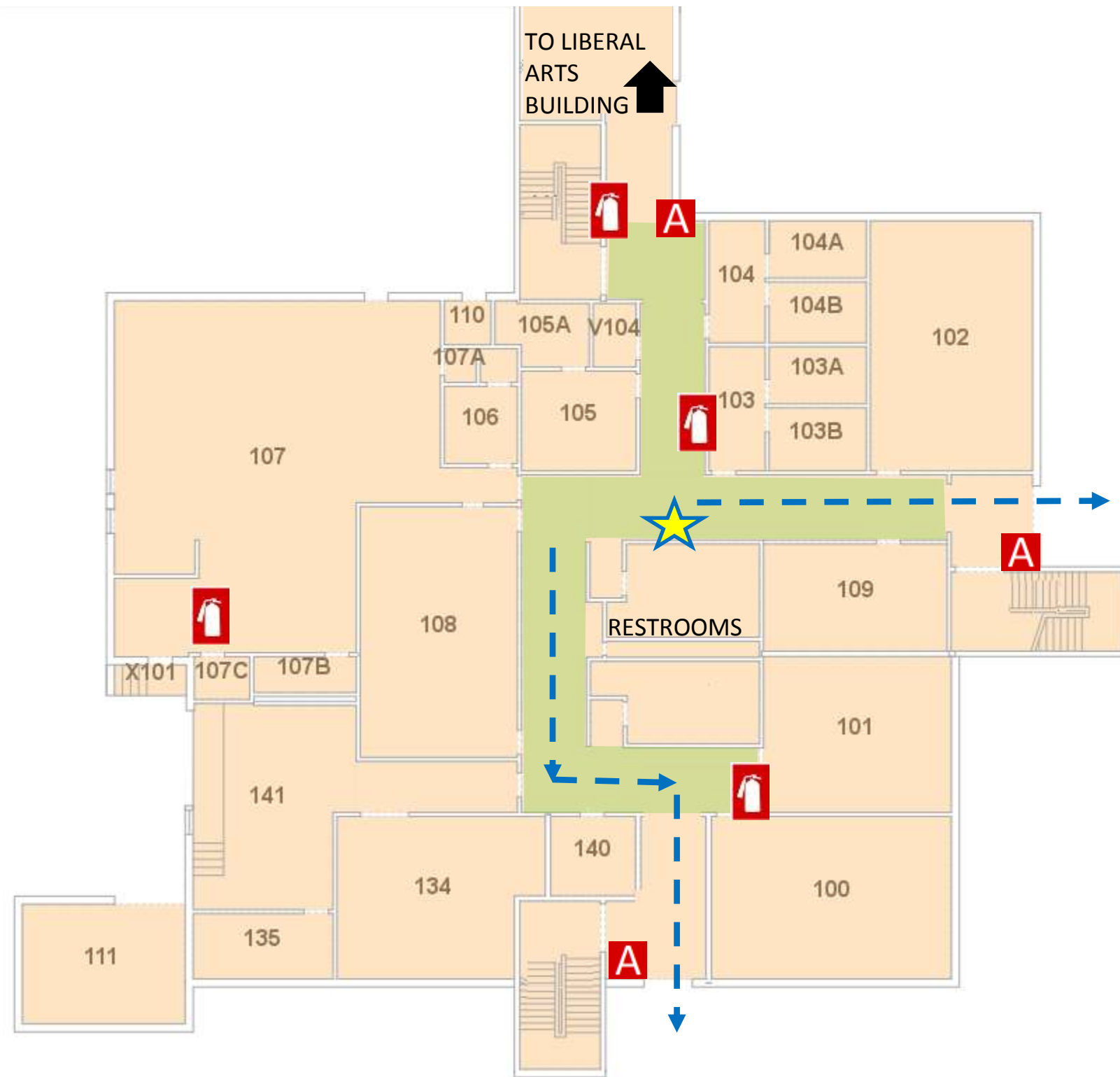


# EMERGENCY PLAN

## EDUCATION BUILDING 1<sup>ST</sup> FLOOR



OFFICE OF  
PUBLIC SAFETY



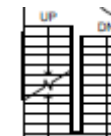
YOU ARE HERE



FIRE EXTINGUISHER



FIRE ALARM PULL STATION



STAIRS



EXIT ROUTE



SEVERE WEATHER SHELTER AREAS



1<sup>st</sup> FLOOR, RESTROOMS  
1<sup>st</sup> FLOOR, INTERIOR HALLS  
1<sup>st</sup> FLOOR, RESTROOMS

**IN CASE OF FIRE USE STAIRWAY TO EXIT- DO NOT USE ELEVATOR**



Join at [www.aum.edu](http://www.aum.edu) to receive campus emergency notifications

CAMPUS POLICE  
334-244-3424



EMERGENCY EVACUATION CHAIR LOCATED ON 3<sup>RD</sup> FLOOR