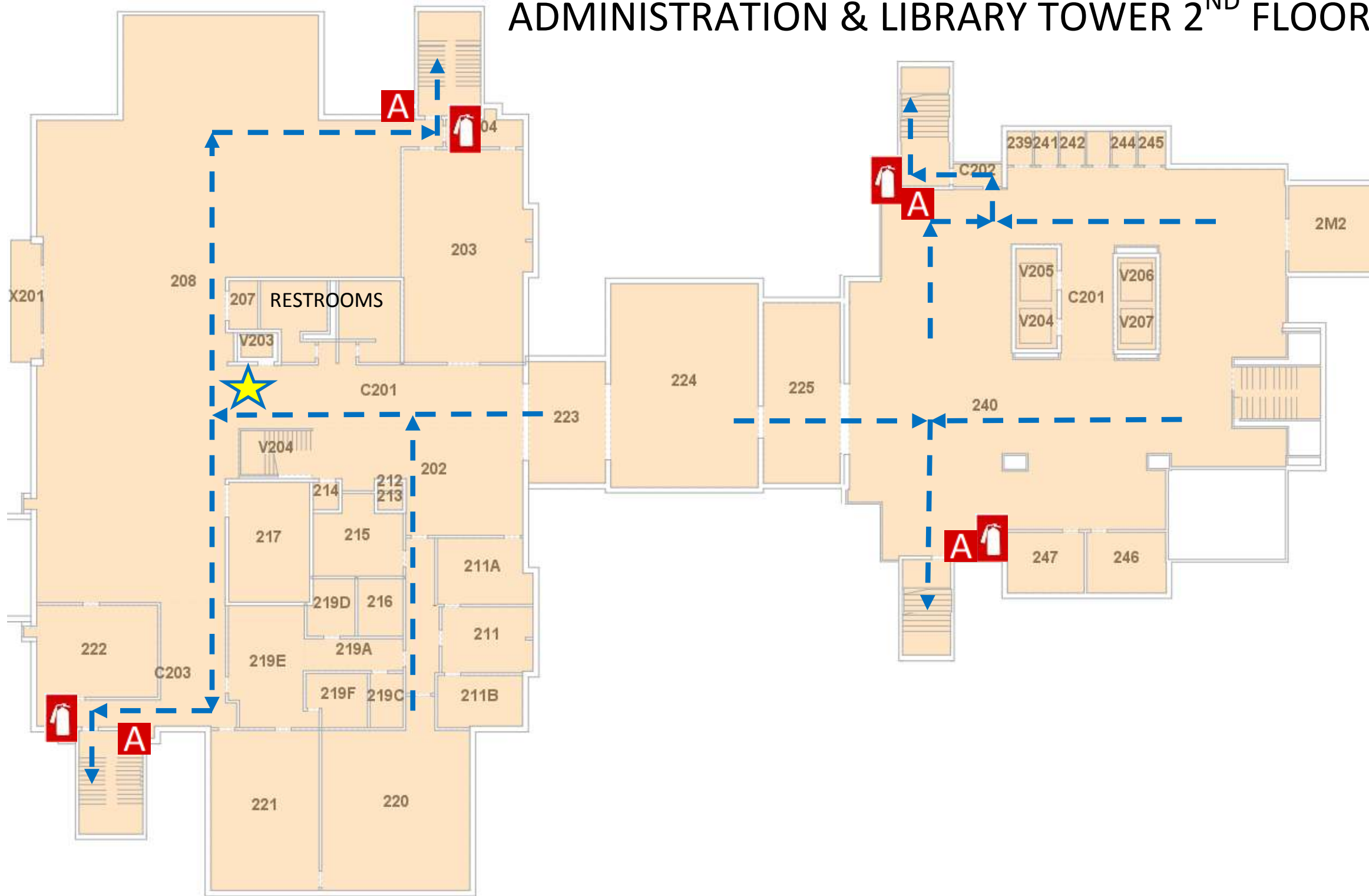





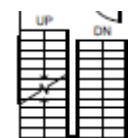
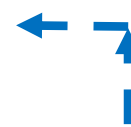

EMERGENCY PLAN


ADMINISTRATION & LIBRARY TOWER 2ND FLOOR



OFFICE OF
PUBLIC SAFETY



-  YOU ARE HERE
-  FIRE EXTINGUISHER
-  FIRE ALARM PULL STATION
-  STAIRS
-  EXIT ROUTE
-  SEVERE WEATHER SHELTER AREAS

- 
 - 1st FLOOR, ROOM 137
 - 1st FLOOR, ROOM 103
 - 1st FLOOR, ROOM 114
 - 1st FLOOR, INTERIOR HALLS

**IN CASE OF FIRE USE
STAIRWAY TO EXIT-
DO NOT USE ELEVATOR**

AUM ALERT Join at www.aum.edu to receive campus emergency notifications

**CAMPUS POLICE
334-244-3424**