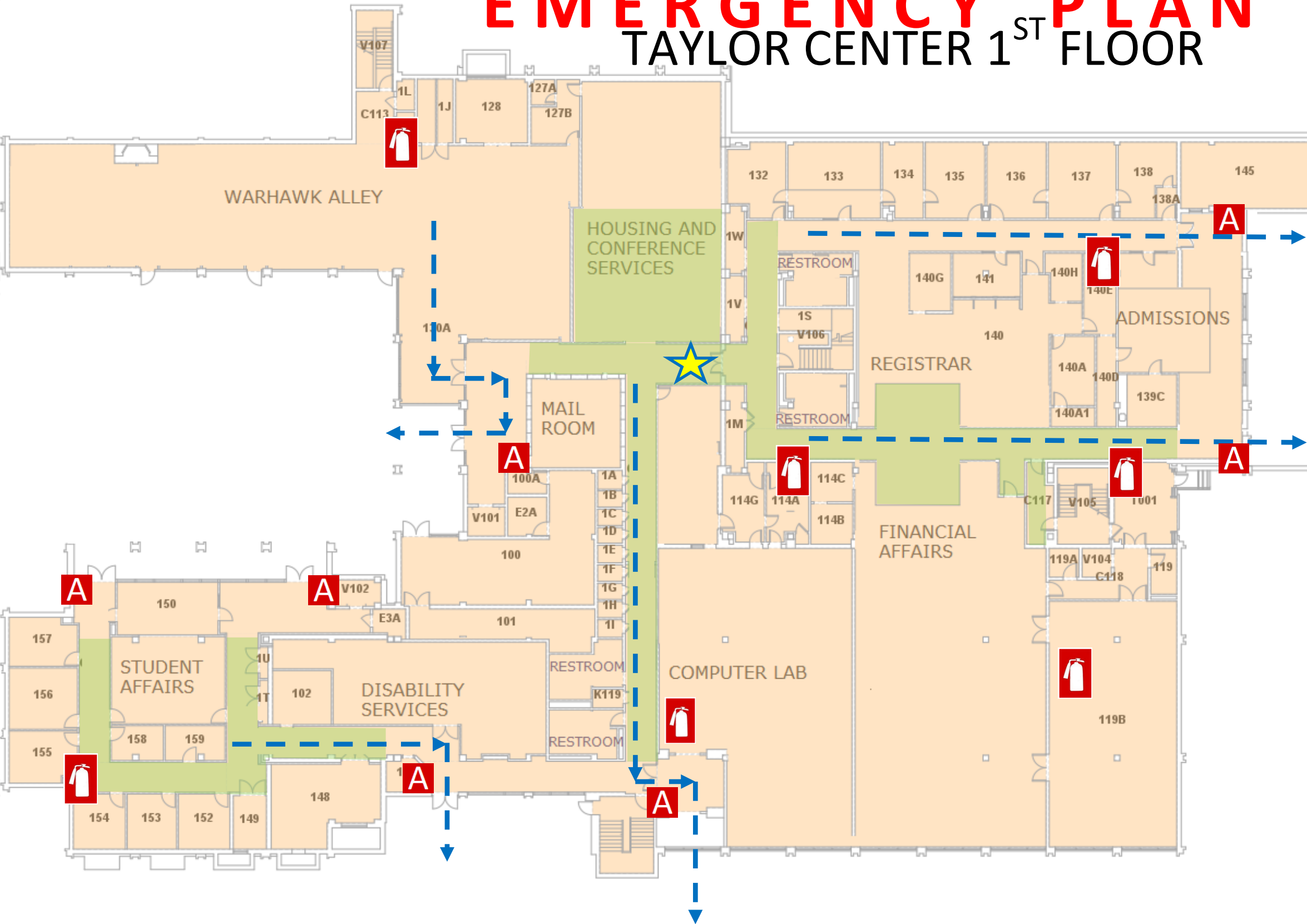





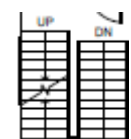
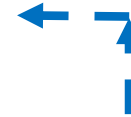

EMERGENCY PLAN


TAYLOR CENTER 1ST FLOOR



OFFICE OF
PUBLIC SAFETY



-  YOU ARE HERE
-  FIRE EXTINGUISHER
-  FIRE ALARM PULL STATION
-  STAIRS
-  EXIT ROUTE
-  SEVERE WEATHER SHELTER AREAS

-  SEVERE WEATHER SHELTER AREA
- 1ST FLOOR, INTERIOR HALLS
- 1ST FLOOR, ROOM 125 (HOUSING OFFICE)
- 1ST FLOOR RESTROOMS

IN CASE OF FIRE USE STAIRWAY TO EXIT- DO NOT USE ELEVATOR

AUM ALERT Join at www.aum.edu to receive campus emergency notifications

CAMPUS POLICE
334-244-3424

 **EMERGENCY EVACUATION CHAIR LOCATED ON 3RD FLOOR**