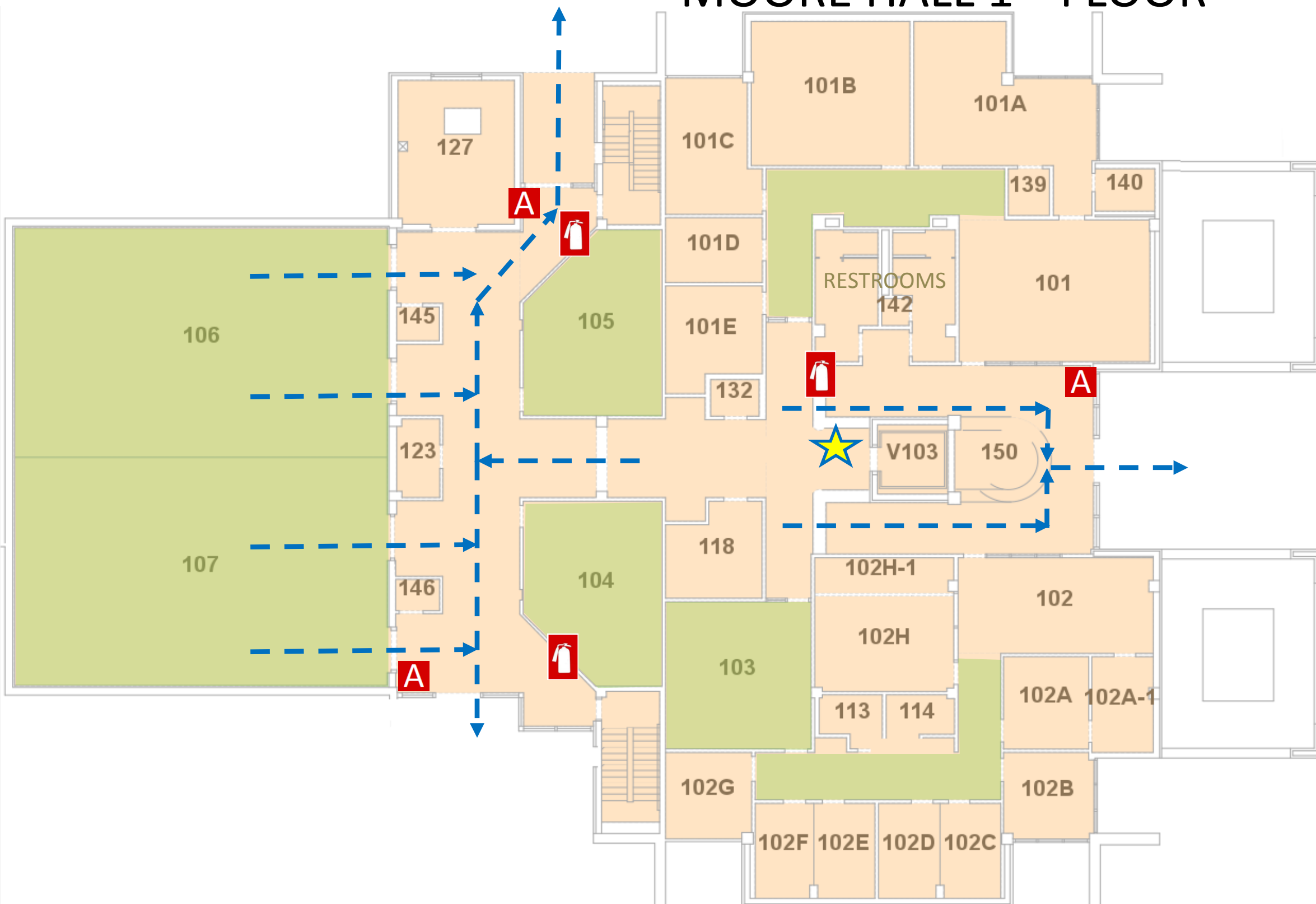


# EMERGENCY PLAN

## MOORE HALL 1<sup>ST</sup> FLOOR



OFFICE OF  
PUBLIC SAFETY



-  YOU ARE HERE
-  FIRE EXTINGUISHER
-  FIRE ALARM PULL STATION
-  STAIRS
-  EXIT ROUTE
-  SEVERE WEATHER SHELTER AREAS



- 1<sup>st</sup> FLOOR, ROOM 107
- 1<sup>st</sup> FLOOR, ROOM 106
- 1<sup>st</sup> FLOOR, ROOM 105
- 1<sup>st</sup> FLOOR, ROOM 103
- 1<sup>st</sup> FLOOR, ROOM 104
- 1<sup>st</sup> FLOOR, Restrooms
- Hallway Areas Rm 101&102

**IN CASE OF FIRE USE  
STAIRWAY TO EXIT-  
DO NOT USE ELEVATOR**

**AUM ALERT** Join at [www.aum.edu](http://www.aum.edu) to receive campus emergency notifications

**CAMPUS POLICE**  
334-244-3424

 **EMERGENCY EVACUATION  
CHAIR LOCATED ON 3<sup>RD</sup> FLOOR**