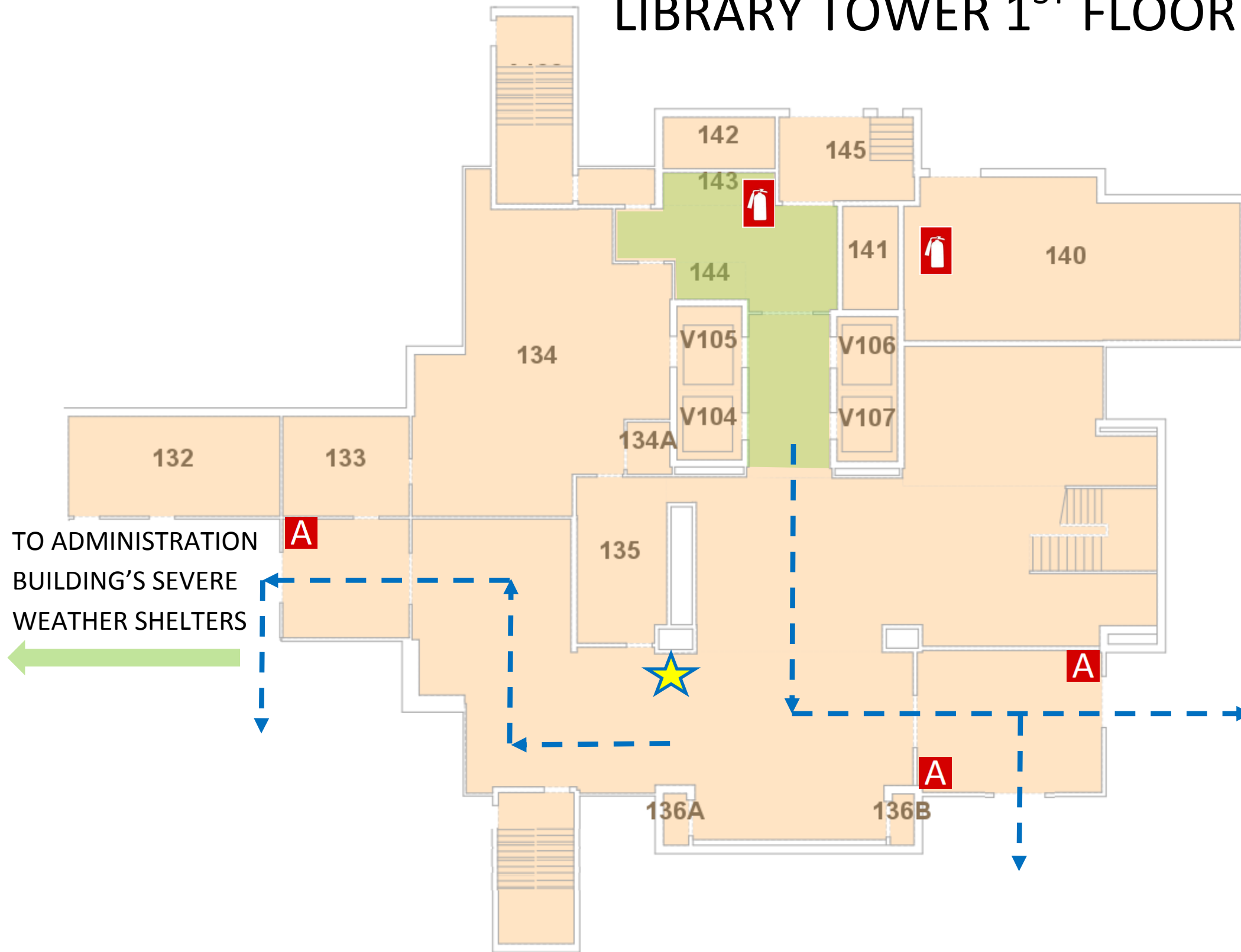


# EMERGENCY PLAN




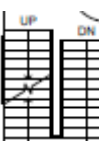


## LIBRARY TOWER 1<sup>ST</sup> FLOOR




OFFICE OF  
PUBLIC SAFETY



TO ADMINISTRATION  
BUILDING'S SEVERE  
WEATHER SHELTERS

-  YOU ARE HERE
-  FIRE EXSTINGUISHER
-  FIRE ALARM PULL STATION
-  STAIRS
-  EXIT ROUTE
-  SEVERE WEATHER SHELTER AREAS



- 1<sup>st</sup> FLOOR, LOADING DOCK
- 1<sup>st</sup> FLOOR ADMINISTRATION BUILDING (INTERIOR HALL)
- RESTROOMS AND STAIRWELLS ON ALL FLOORS (ONLY AS LAST RESORT)

**IN CASE OF FIRE USE STAIRWAY TO EXIT- DO NOT USE ELEVATOR**

**AUM ALERT** Join at [www.aum.edu](http://www.aum.edu) to receive campus emergency notifications

**CAMPUS POLICE**  
334-244-3424

 **EMERGENCY EVACUATION CHAIR ON FLOORS 10 & 7**