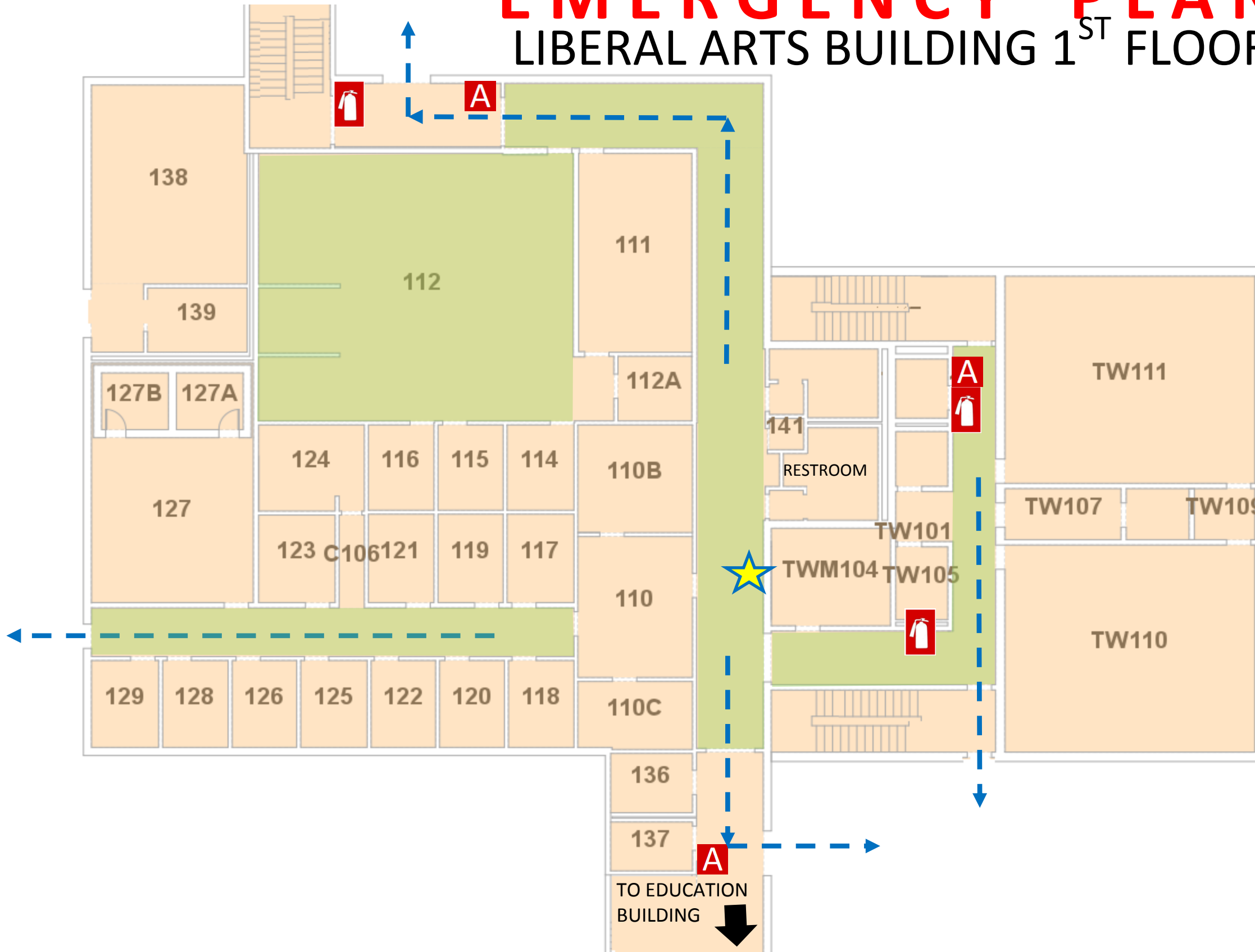


EMERGENCY PLAN

LIBERAL ARTS BUILDING 1ST FLOOR



OFFICE OF
PUBLIC SAFETY



- YOU ARE HERE
- FIRE EXTINGUISHER
- FIRE ALARM PULL STATION
- STAIRS
- EXIT ROUTE
- SEVERE WEATHER SHELTER AREAS

- 1st FLOOR, RESTROOMS
 - 1st FLOOR, INTERIOR HALLS
 - 1st FLOOR, RESTROOMS
 - 1st FLOOR, ROOM 112

IN CASE OF FIRE USE STAIRWAY TO EXIT- DO NOT USE ELEVATOR

AUM ALERT Join at www.aum.edu to receive campus emergency notifications

CAMPUS POLICE
334-244-3424

EMERGENCY EVACUATION CHAIR LOCATED ON 3RD FLOOR