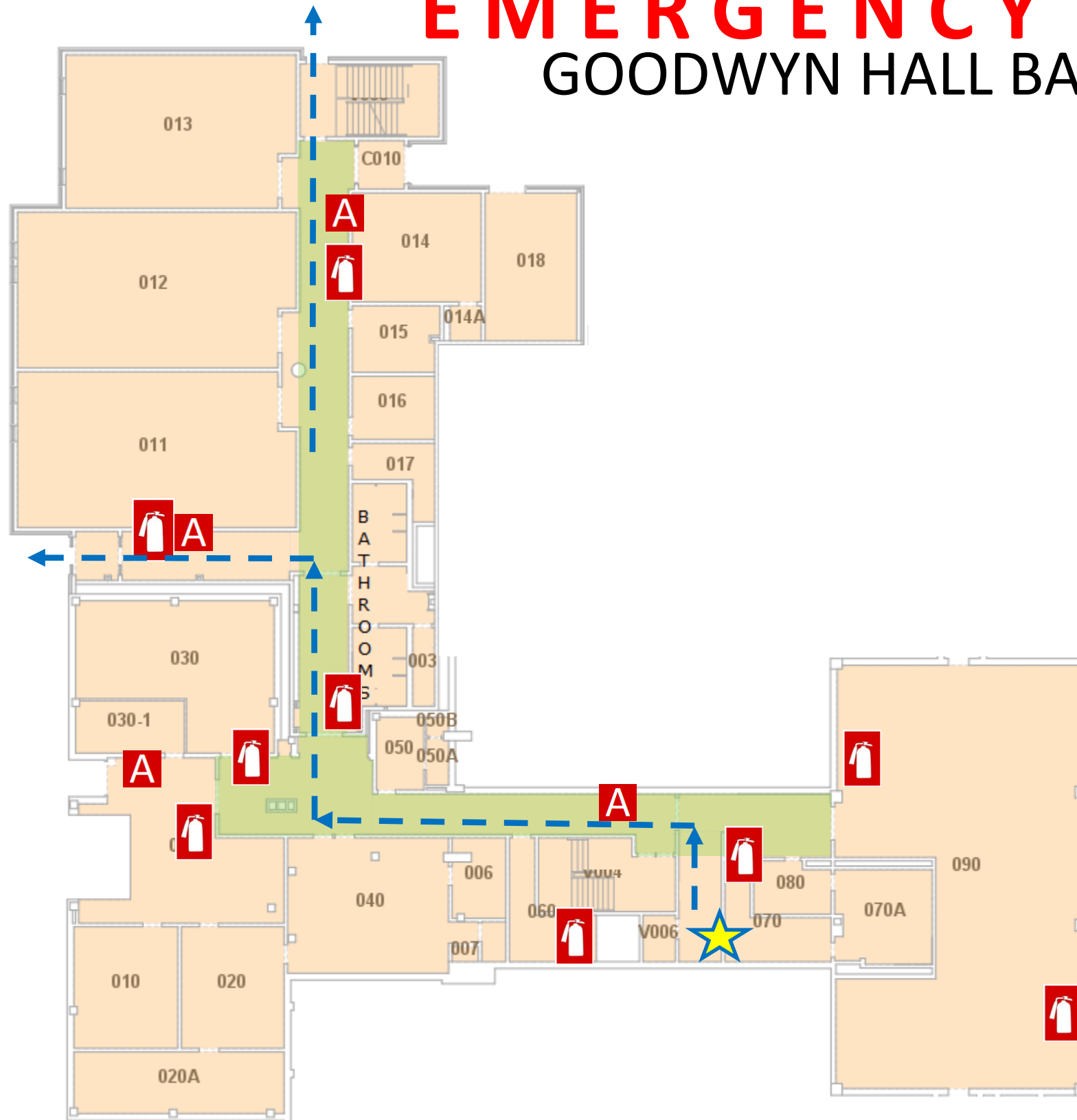


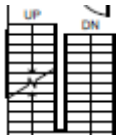
# EMERGENCY PLAN

## GOODWYN HALL BASEMENT



OFFICE OF  
PUBLIC SAFETY



-  YOU ARE HERE
-  FIRE EXTINGUISHER
-  FIRE ALARM PULL STATION
-  STAIRS
-  EXIT ROUTE
-  SEVERE WEATHER SHELTER AREAS



- 1<sup>st</sup> FLOOR, ROOM 109
- 1<sup>st</sup> FLOOR, ROOM 110
- 1<sup>st</sup> FLOOR, ROOM 111
- 1<sup>st</sup> FLOOR, ROOM 112
- 1<sup>st</sup> FLOOR, ROOM 113
- 1<sup>st</sup> FLOOR, ROOM 116
- Basement, Hallways

**IN CASE OF FIRE USE  
STAIRWAY TO EXIT-  
DO NOT USE ELEVATOR**



Join at [www.aum.edu](http://www.aum.edu) to receive  
campus emergency notifications

CAMPUS POLICE  
334-244-3424



EMERGENCY EVACUATION  
CHAIR LOCATED ON 3<sup>RD</sup> FLOOR