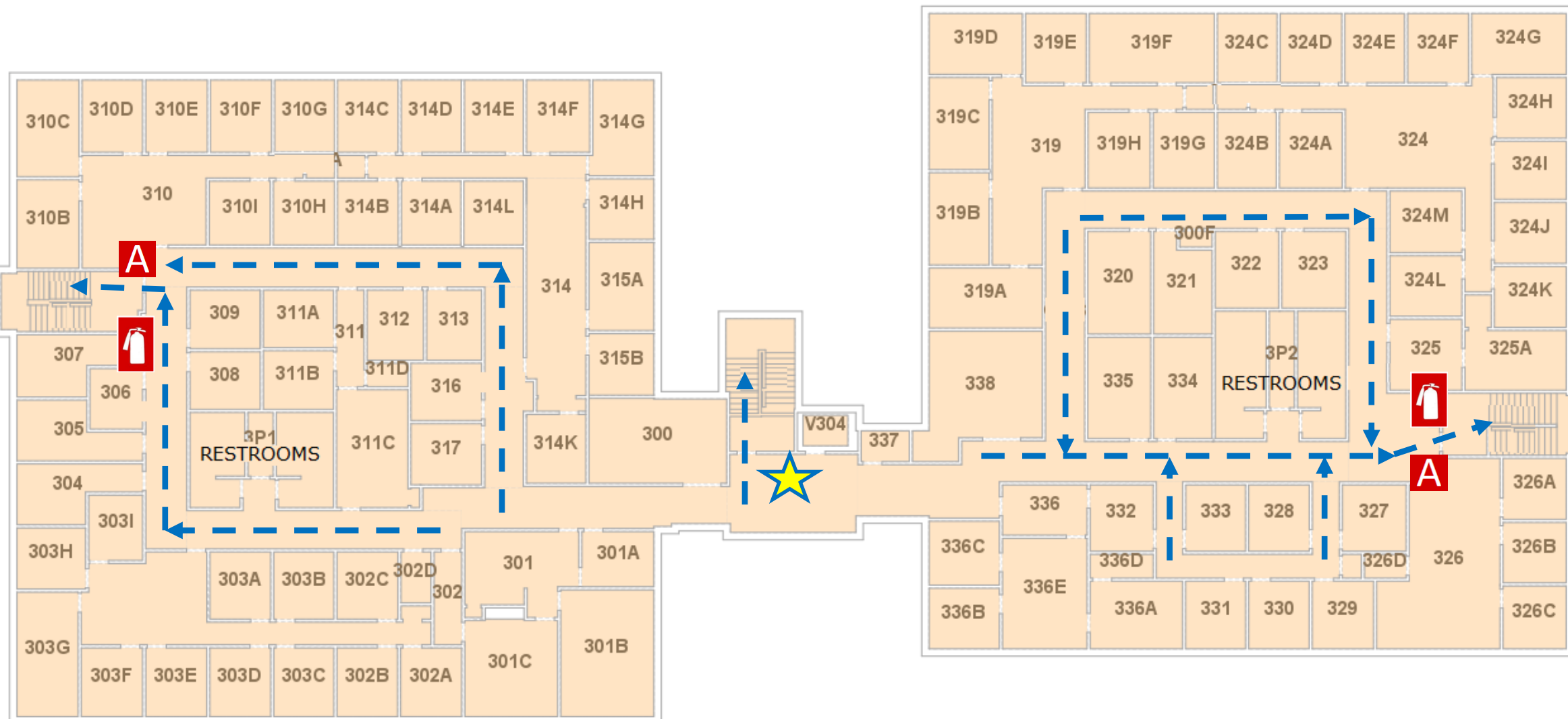


EMERGENCY PLAN

CLEMENT HALL 3RD FLOOR



OFFICE OF
PUBLIC SAFETY



- YOU ARE HERE
- FIRE EXTINGUISHER
- FIRE ALARM PULL STATION
- STAIRS
- EXIT ROUTE
- SEVERE WEATHER SHELTER AREAS

- SEVERE WEATHER SHELTER AREA
- 1st FLOOR, ROOM 108
- 1st FLOOR, INTERIOR HALLS
- 1st FLOOR, RESTROOMS
- 2ND FLOOR, INTERIOR HALL

IN CASE OF FIRE USE STAIRWAY TO EXIT- DO NOT USE ELEVATOR

Join at www.aum.edu to receive campus emergency notifications

CAMPUS POLICE
334-244-3424

EMERGENCY EVACUATION CHAIR LOCATED ON 3RD FLOOR