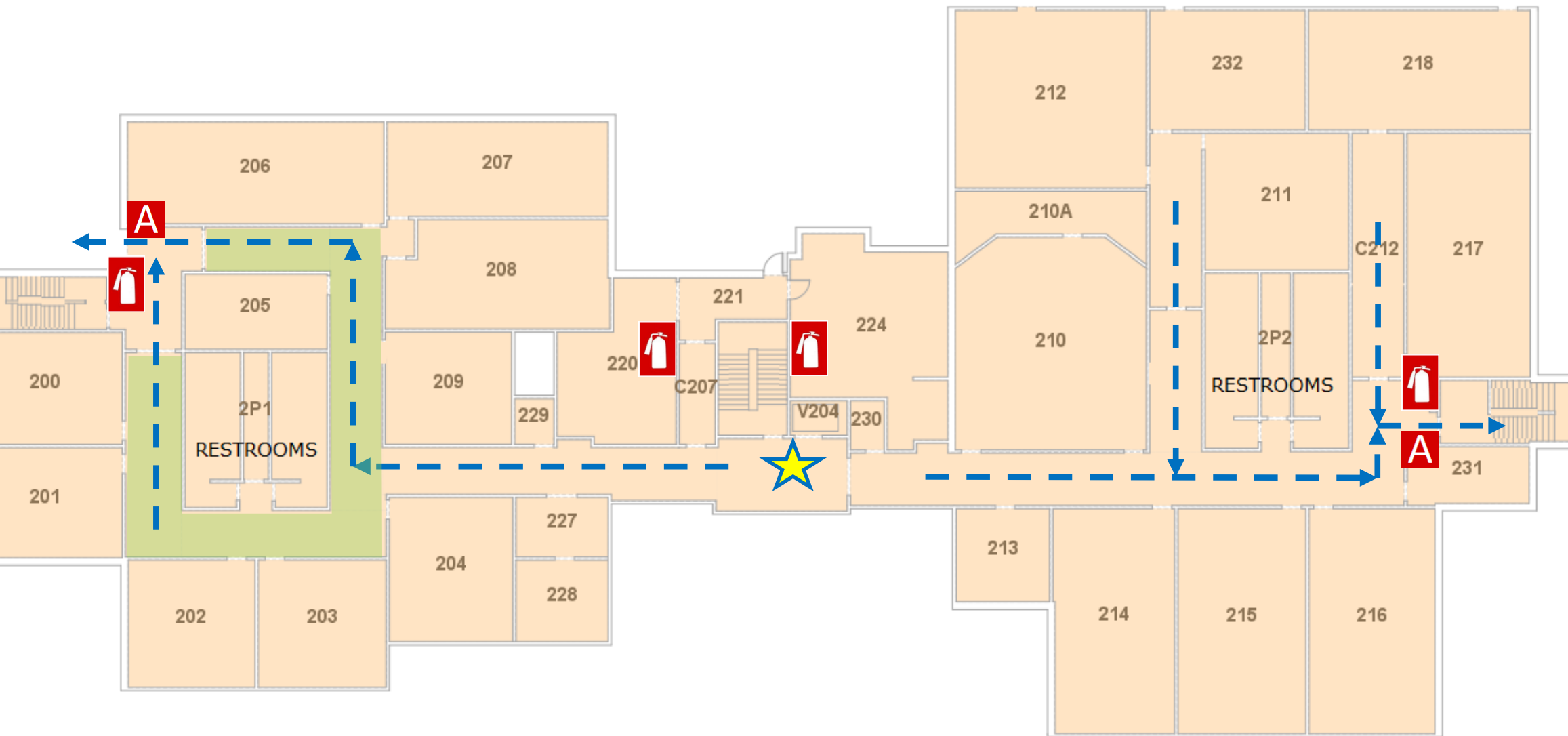



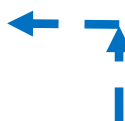
# EMERGENCY PLAN


## CLEMENT HALL 2<sup>ND</sup> FLOOR



OFFICE OF  
PUBLIC SAFETY



-  YOU ARE HERE
-  FIRE EXTINGUISHER
-  FIRE ALARM PULL STATION
-  STAIRS
-  EXIT ROUTE
-  SEVERE WEATHER SHELTER AREAS

-  SEVERE WEATHER SHELTER AREA
- 1<sup>st</sup> FLOOR, ROOM 108
- 1<sup>st</sup> FLOOR, INTERIOR HALLS
- 1<sup>st</sup> FLOOR, RESTROOMS
- 2<sup>ND</sup> FLOOR, INTERIOR HALL

**IN CASE OF FIRE USE STAIRWAY TO EXIT- DO NOT USE ELEVATOR**

**AUM ALERT** Join at [www.aum.edu](http://www.aum.edu) to receive campus emergency notifications

**CAMPUS POLICE**  
334-244-3424



**EMERGENCY EVACUATION CHAIR LOCATED ON 3<sup>RD</sup> FLOOR**