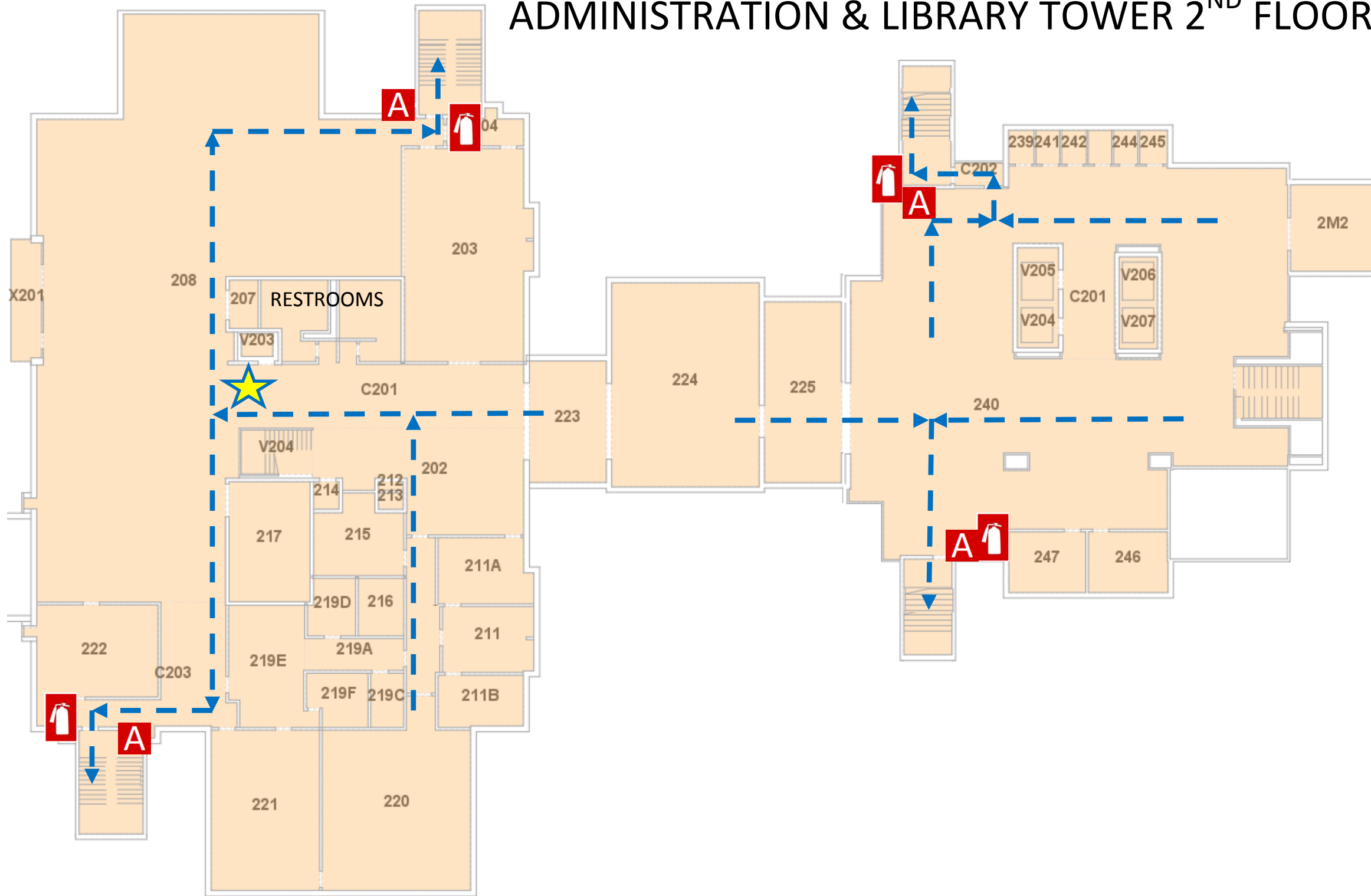





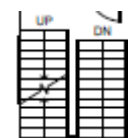
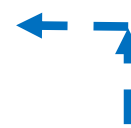

# EMERGENCY PLAN


## ADMINISTRATION & LIBRARY TOWER 2<sup>ND</sup> FLOOR



OFFICE OF  
PUBLIC SAFETY



-  YOU ARE HERE
-  FIRE EXTINGUISHER
-  FIRE ALARM PULL STATION
-  STAIRS
-  EXIT ROUTE
-  SEVERE WEATHER SHELTER AREAS



- 1<sup>st</sup> FLOOR, ROOM 137
- 1<sup>st</sup> FLOOR, ROOM 103
- 1<sup>st</sup> FLOOR, ROOM 114
- 1<sup>st</sup> FLOOR, INTERIOR HALLS

**IN CASE OF FIRE USE  
STAIRWAY TO EXIT-  
DO NOT USE ELEVATOR**

**AUM ALERT** Join at [www.aum.edu](http://www.aum.edu) to receive campus emergency notifications

**CAMPUS POLICE  
334-244-3424**