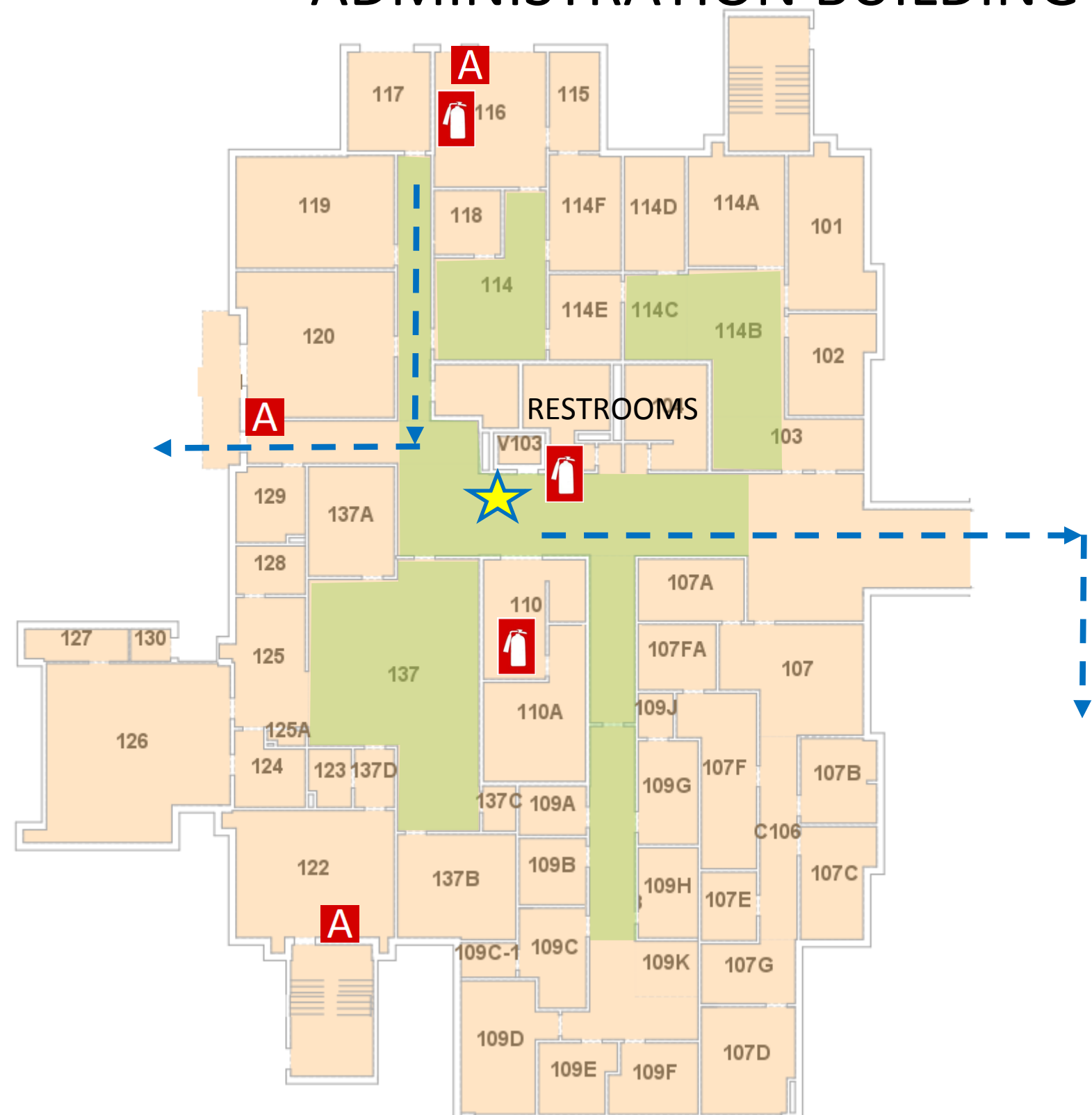





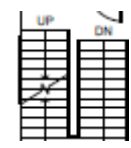
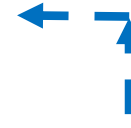
EMERGENCY PLAN


ADMINISTRATION BUILDING 1ST FLOOR



OFFICE OF
PUBLIC SAFETY



-  YOU ARE HERE
-  FIRE EXTINGUISHER
-  FIRE ALARM PULL STATION
-  STAIRS
-  EXIT ROUTE
-  SEVERE WEATHER SHELTER AREAS

 SEVERE WEATHER SHELTER AREA

- 1st FLOOR, ROOM 137
- 1st FLOOR, ROOM 103
- 1st FLOOR, ROOM 114
- 1st FLOOR, INTERIOR HALLS

IN CASE OF FIRE USE STAIRWAY TO EXIT- DO NOT USE ELEVATOR

AUM ALERT Join at www.aum.edu to receive campus emergency notifications

CAMPUS POLICE
334-244-3424