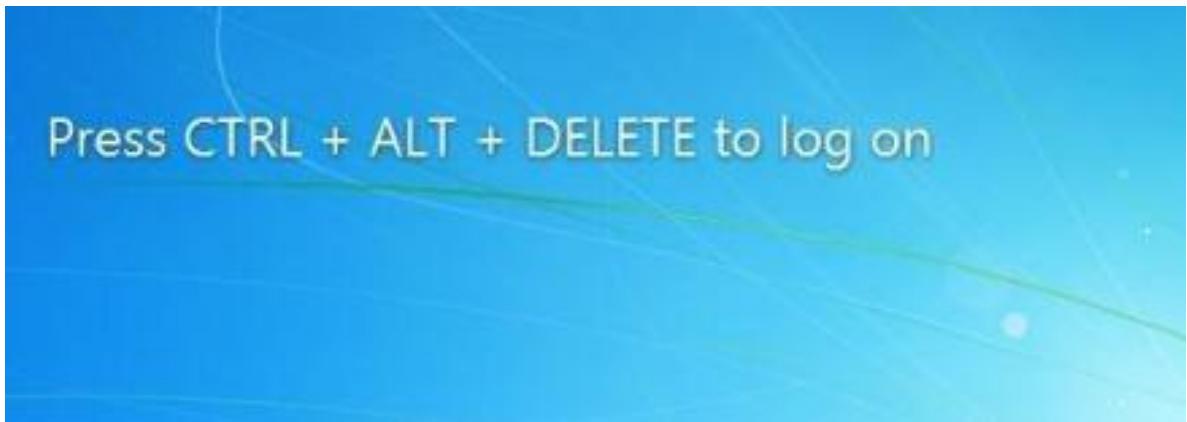


AUM Faculty and Staff Password Reset for Windows Users

Press CTRL + ALT+ DELETE to log on your computer.



After reading the AUM Appropriate Use Policy, click OK.

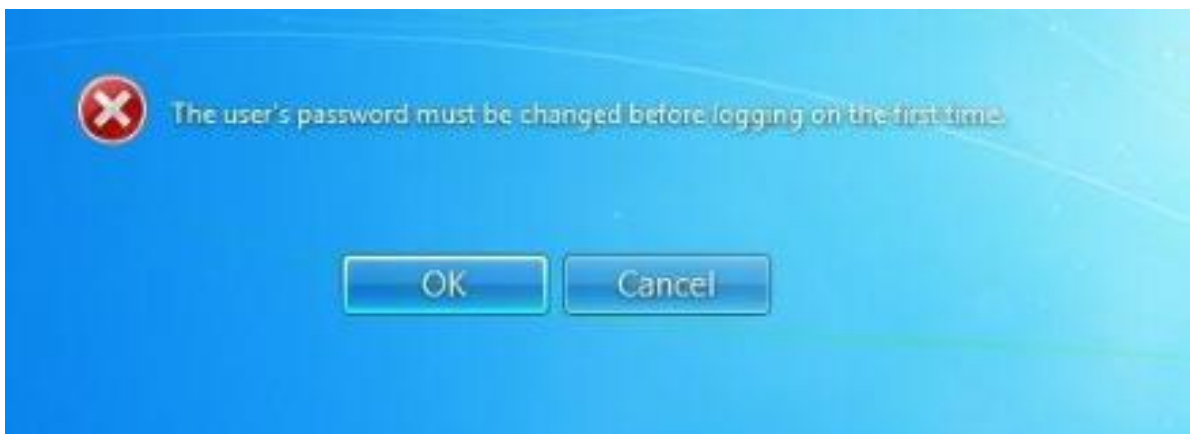


AUM Faculty and Staff Password Reset



Enter your current AUM user name and password. Click on the arrow.

You will be prompted to change your password. Click OK.



AUM Faculty and Staff Password Reset

Enter your current password, then your new password.
Confirm your new password, then click the arrow.

A screenshot of a Windows-style password reset dialog box. The background is blue with a faint grid pattern. At the top center is a large, empty square box with a blue border and a drop shadow. Below it are four text input fields. The first field contains the text 'password_test'. The second, third, and fourth fields are filled with black dots, representing masked passwords. To the right of the fourth field is a blue circular button with a white right-pointing arrow. Below the input fields, the text 'Log on to: AUM' is displayed, followed by a smaller link text 'How do I log on to another domain?'. At the bottom center is a 'Cancel' button.

Reminder: AUM requires all user passwords to contain minimum of 8 alphanumeric characters, including:

- A combination of upper and lower case letters
- At least one number
- No common words or phrases
- No variant of your user name.

AUM Faculty and Staff Password Reset



If the change was successful, you will receive confirmation. Use your AUM user name and your newly created password to login. **As a reminder, it may take up to 15 minutes for your new password to replicate to all AUM systems. If you need assistance or have any questions, please call the ITS Help Desk at 244-3500.**